



# BESPOKE ONYX | LOOKBOOK

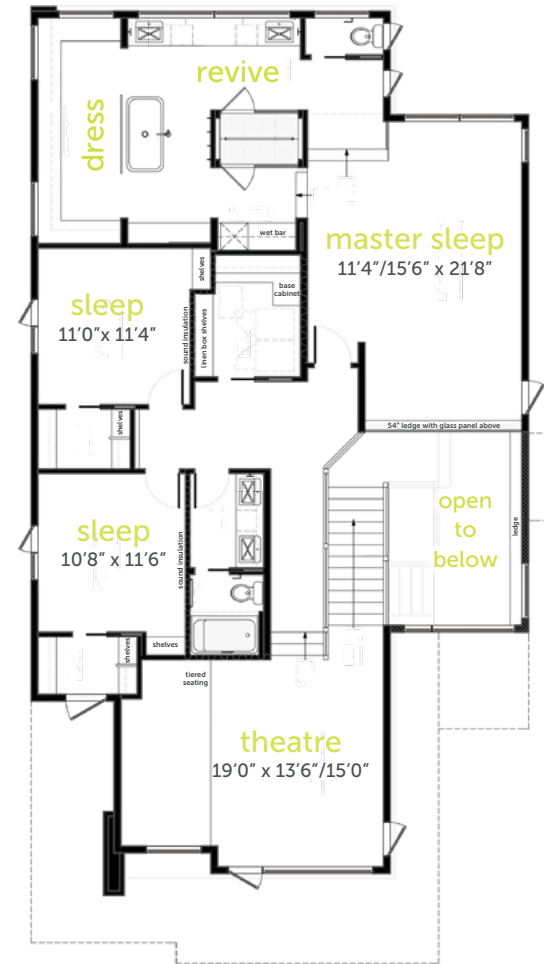
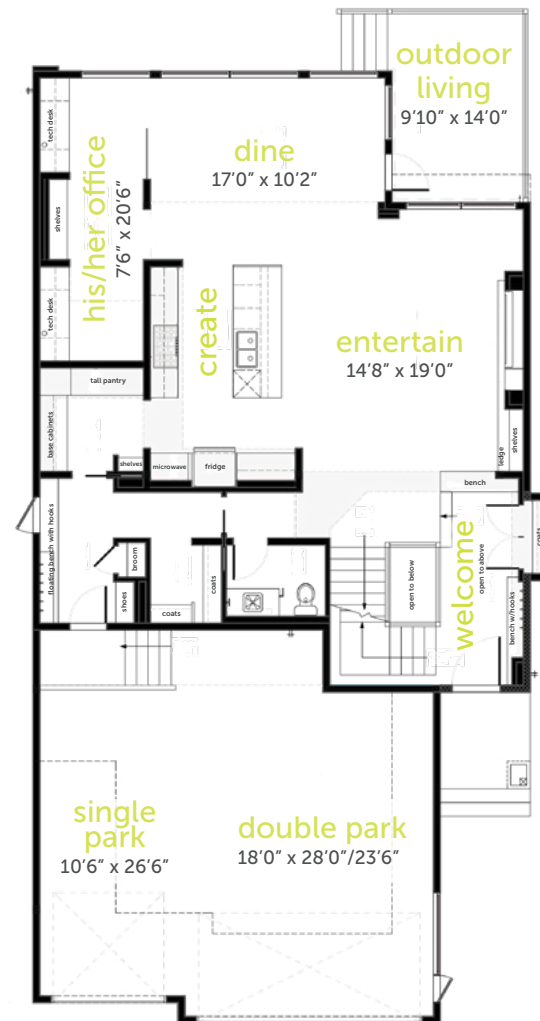
# BESPOKE ONYX

# LOOKBOOK

The Bespoke Onyx is a masterclass in design, from the unique architecture, to the interior design, to the flow of the floor plan. Each and every area has been designed to flow, feel and embody marvelous modern design.

## Elements

- + Main floor: 1425 sq.ft
- + Upper: 1722 sq.ft.
- + Total: 3147 sq.ft. to
- + 3 Bedrooms
- + 2.5 Bathrooms
- + Two Storeys
- + Triple garage
- + Open to above dropped foyer
- + Glass backsplash
- + His and Hers main floor office space
- + Walk through pantry
- + Large mudroom with walk-in closet
- + Upper theatre with tiered seating
- + Upper laundry with linen storage
- + Large master suite with glass over looking foyer
- + Walk-in closet with custom cabinetry
- + Spa ensuite with freestanding tub, central glass shower and wet bar







outstanding

open spaces.

establish  
enticing edibles







dine

on delicious dinners.



sharing

is not necessary.





forge

family moments.





awe  
and excite.





doze  
and dream.



revitalize

and rejuvenate.







soak

in luxurious lathers.





reflect  
and celebrate.



astounding  
architecture.



## CONTACT US

Live Life Modern with Kanvi Homes // [inquiries@kanvihomes.com](mailto:inquiries@kanvihomes.com) // 780.439.9000



live life modern   
**Kanvi**